

pinkmoon

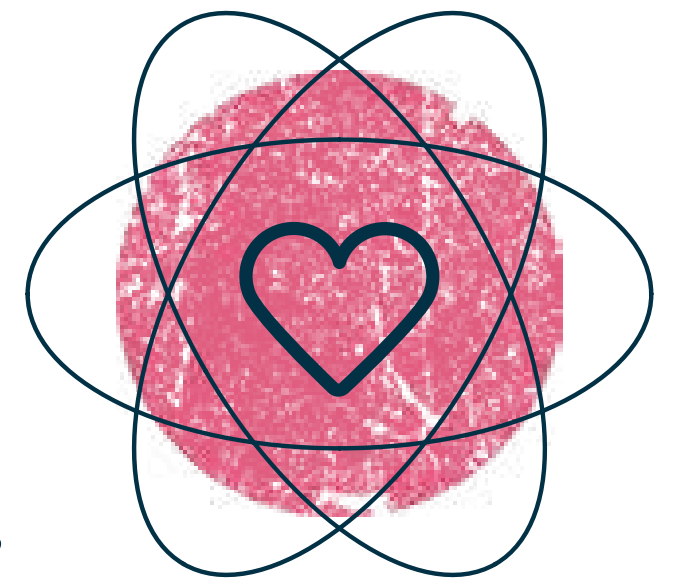
EVENTS



FURNITURE, MATTING
& ACCESSORIES

Seamless event delivery
for all occasions.

WHY CHOOSE US?



Pink Moon Events is a full-service events company that creates unforgettable experiences alongside seamless event delivery, whatever the occasion.

Professional, flexible and always trustworthy. We are the events partner you can count on to show up and deliver, no matter what gets thrown at us.

WE CARE

People aren't just a number to us. Whether that's the members of our team, our valued clients, or the customers using our services. It's the people who make us, and that's why we treat them with utmost respect.

WE ARE ADAPTABLE

We are chameleon-like in the way we adapt to different climates. We can survive extreme environments, whether that's early starts and late finishes, or dealing with whatever the weather may bring.

WE DELIVER

We're committed to high-performance and absolute quality in the work we deliver. We show up, we work hard, and we won't settle for any less.

WE'RE FUN TO WORK WITH

Being a family business means we're a lot like a family! There's a spirit of camaraderie running through our team and our clients say they love working with us.

WE ARE TRUSTWORTHY

Our success is built on our professionalism, diligence and reliability, so we won't be giving up on any of that now. We are the supplier you can depend on and trust to get it right.

CONTENTS

| | |
|-------------------|----|
| WHY PINK MOON? | 02 |
| FURNITURE | 03 |
| FLOORING | 04 |
| EXTRA FURNISHINGS | 05 |
| BEDS AND BEDDING | 06 |
| MORE FROM US | 07 |

FURNITURE

If you're in need of furniture for an outdoor event like a garden party or wedding, or just want to rent some table sets, let us know your requirements and we'll handle the rest. We've got you covered for all types of furniture rentals.



OUR FURNITURE:



TRESTLE TABLES



CHAIRS & BENCHES



BAR UNIT



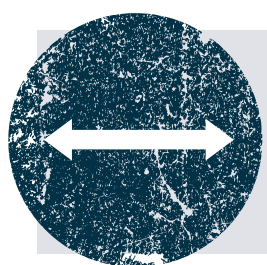
COSY CHAIRS

Whether you have a basic concept or a fully developed plan, we provide the resources to create the foundation for your chic occasion. Our wide selection of seating and tables can accommodate over 500 guests, ensuring that we can meet your event's requirements. Find everything you need, from mood boards to sketches, to bring your vision to life.



FLOORING

COIR MATTING:



RANGE OF SIZES



EASY TO CLEAN



DURABLE



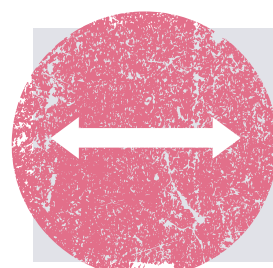
CONVENIENT

If you're looking for a natural and stylish flooring option for your marquee, coir matting is a great choice. The rich colours and fibres add a warm and inviting ambience to any event, while its golden-brown appearance complements any decor. Coir mats are also reversible, washable, and environmentally friendly, making them a smart and practical choice for entrance matting.

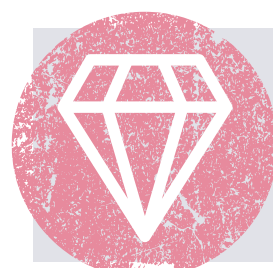


We offer Rola-Trac and DuraMatt temporary flooring and access mats to protect the ground from foot traffic during music events. This helps maintain a good relationship with the site owner and is particularly useful for walkways, back-of-house areas, and catering gazebos.

PLASTIC FLOORING:



RANGE OF SIZES



AESTHETIC



NATURAL

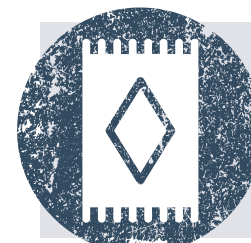
EXTRA FURNISHINGS

Take a load off and unwind! We have a wide variety of soft furnishings, like cushions, rugs, throws, and beanbags, that can add the perfect final touch to your event. Whether you choose to scatter, group, or drape them, our soft furnishings will complement our furniture items beautifully.

SOFT FURNISHINGS:



THROWS & BLANKETS



RUGS



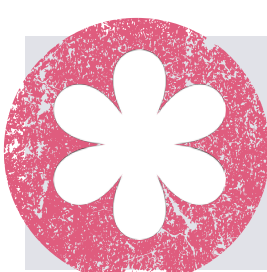
PILLOWS & CUSHIONS



BEAN BAGS



DECOR:



FLOWERS



LED CANDLES



DECORATIVE FINISHES



MIRRORS

We can assist in creating a cosy and inviting atmosphere for your event with a variety of decorations suitable for any occasion. Our collection includes lanterns, artificial greenery, and LED candles to help you realise your vision and set the perfect mood.

BEDS & BEDDING

Ensuring your event has that luxury hotel feeling has never been easier with bed frames for extra storage space, 3-inch or 6-inch foam mattresses, cosy 13.5 tog duvets and fluffy pillows.



We offer a variety of beds and bedding options, including classic, deluxe, and super deluxe ranges. Our mattresses range from 3 to 6 inches, and we provide fitted sheets to ensure your guests comfort. For those seeking a more luxurious experience, we also offer raised beds with plush mattresses and full bedding bundles, including a duvet, pillow, and throw. Our goal is to provide all the creature comforts available in our own accommodations.

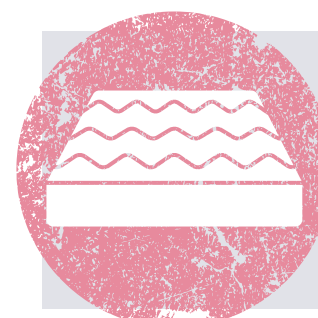
OUR BEDS & BEDDING:



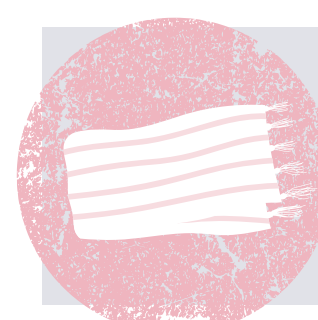
BEDS



LUXURIOUS BEDDING

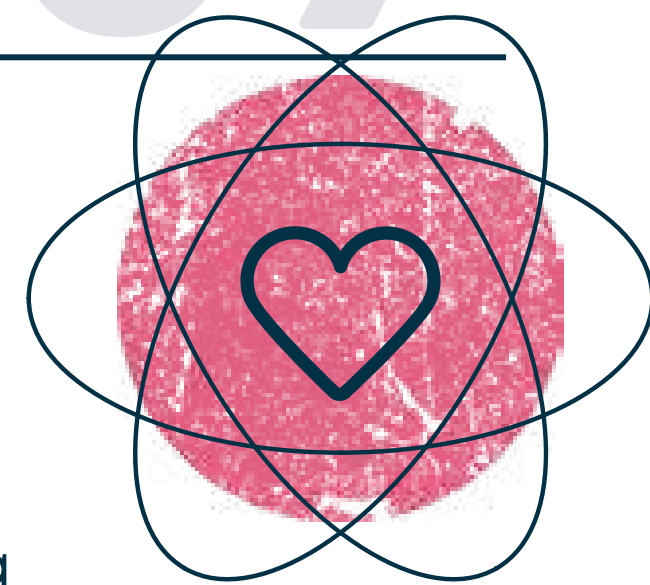


FOAM MATTRESSES



THROWS & CUSHIONS

MORE FROM US



Pink Moon Events is a comprehensive event planning company specialising in crafting exceptional experiences while ensuring flawless event execution for any type of celebration.

Check out the below categories to see what else we can offer outside of **staffing** for your event.



ACCOMMODATION



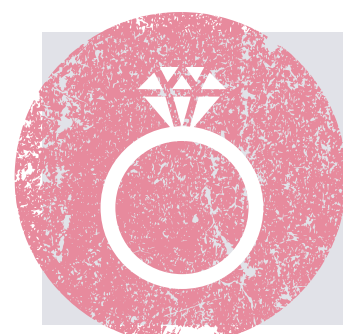
POWER & LIGHTING



CORPORATE EVENTS



CONSUMABLES



WEDDINGS



MARQUEES & STRUCTURES



PARTIES



FURNITURE, MATTING & ACCESSORIES



CATERING



PRODUCT CATALOGUE



STAFFING



GET IN TOUCH

Whether your event is large or small, we have something to offer. From hire of kit to full event delivery, with our experience, we can do it.

Our service offering is constantly expanding, just like our brand and reputation. If you don't find what you're looking for in this brochure, please feel free to contact us for more information.

So, if you like what you hear and want us to help you take your event to the next level, just get in touch!



01423 575696



www.pinkmoonevents.co.uk



info@pinkmoonevents.co.uk



[@pinkmooneventsuk](https://www.instagram.com/pinkmooneventsuk)

pinkmoon
EVENTS